



D A Oldfield Ltd

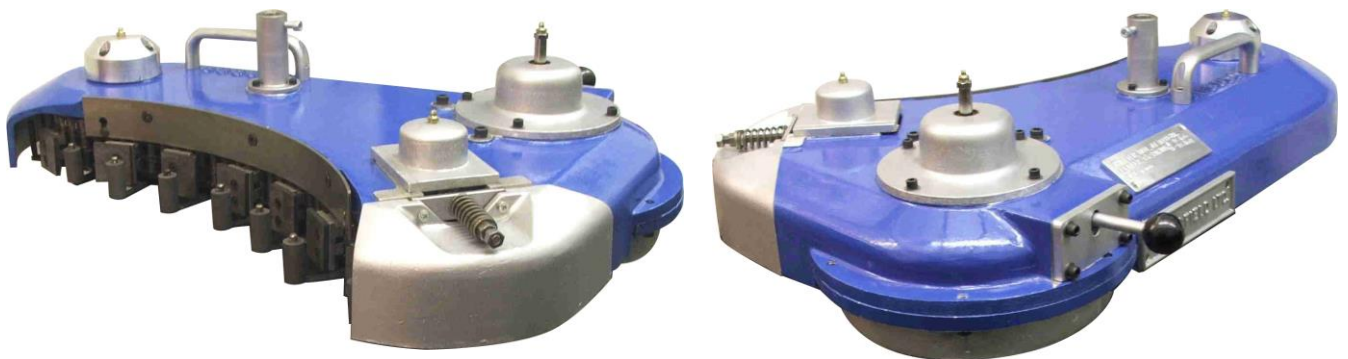
GLASSWORKS TECHNOLOGY • PARTS • SERVICE

SALES BULLETIN No 012

AT 8000 RADIAL TRANSFER UNIT

Our AT 8000 Advanced Radial Transfer Unit has been designed to keep up with the ever-increasing speeds of container production. It is directly synchronised and driven by existing transfer gearboxes and supersedes the STK 9031 Radial Transfer Unit.

The boosted performance has been achieved by a total redesign of the finger cam to achieve smooth retraction and clearance between the fingers as they change direction at speed. At the same time, we were able to introduce a new chain assembly with 19 fingers at 3¾" spacing.



FEATURES

- ☀ **Speeds of over 300 bottles per minute can be achieved using the smoother cam-controlled finger retraction and large diameter end sprocket.**
- ☀ New chain assembly with 19 fingers at 3¾" spacing for 58mm maximum diameter.
- ☀ Improved clearance for fingers to retract on 16 fingers at 4½" spacing chain, which now uses quadruplex connecting links.
- ☀ Choice of 3¾", 4½", 6" and 9" spacing using standard cam
- ☀ Choice of flat or bead type fingers and carbon or stainless steel cloth finger insulation.
- ☀ On request set up for 24 fingers at 3" spacing with 'short retract' cam.

BENEFITS

- Can be used for high-speed lines. Reduced chances of mechanical failure. Longer component life.
- Ideal for tall slender soft drink and Alcopop bottles, as the transfer runs 20% slower than 4 ½" spacing
- Fingers retract without touching each other. Stronger chain assembly with longer life.
- No need to change cams when changing finger spacing. Satisfies customer preference of finger style and insulation material.
- Enables the transfer to handle small ware.

DESIGNS • ADVANCEMENT • ORIGINALITY

1 The Green • Elvington • York YO41 4AF • United Kingdom
Tel: +44 (0)1904 607086 • Fax: +44 (0)1904 607086
Email: sales@daoldfield.co.uk • Website: www.daoldfield.co.uk
Company registered in England • Reg No 3178882 • Vat No GB 599 2017 10